



Campanas Extracción Industrial

Soluciones de Ventilación Mecánica

Campana Extracción Cocina Industrial | Tipo II

Datos del Producto





The VHB Series is Type II, Exhaust Only hood to be used over equipment not producing grease laden vapors. Type II hoods are used for condensation or heat removal applications.

Advantages

- **Exhaust Flow Rates:** Superior exhaust flow rates.
 - **Construction:** Single wall type hood fabricated of Type 304 stainless steel, #3 or #4 polish, on all exposed surfaces when used in condensate applications. Type 430 stainless steel, #3 or #4 polish available when used for heat applications. Pre-punched hanging angles on each end of hood. Additional set provided for hoods longer than 12'.
 - **Condensate Applications:** Integral 4-sided perimeter gutter and one drain standard for high-moisture exhaust.
 - **Reduced Lead Times and Shipping Costs:** Produced on a high volume assembly line at one of five manufacturing facilities to reduce lead times and shipping costs.
 - **Optional REM Construction:** Two options available when removable condensation baffles are required for heavy condensate applications. Designs available for one baffle or two baffle configuration to collect and drain condensation into gutter.
 - **Optional Double Wall Construction:** Double wall front used when switches are needed on the face of the hood and/or lights are desired. Mechanical baffle provides a built-in wiring chase for optimal positioning of electrical controls and outlets on the front face of the hood.
 - **Optional Lights:** Incandescent, LED and fluorescent lights are available.
 - **Optional Make-Up Air:** Make-up air can be supplied through optional front and/or side plenums (PSP Accessory).
 - **Optional Enclosure Panels:** Constructed of stainless steel. Sized to extend from hood top to ceiling, enclosing pipe and hanging parts.
-

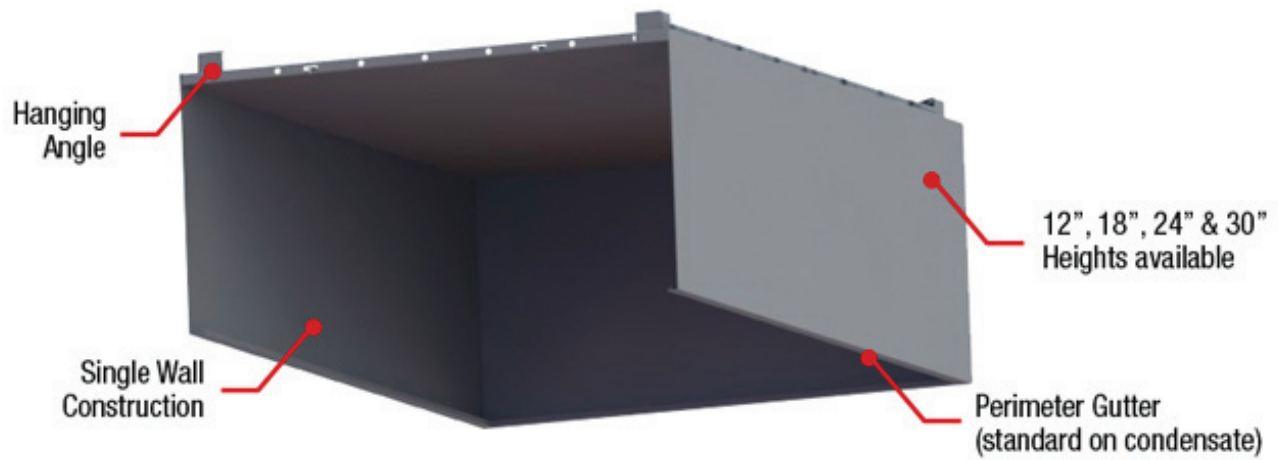
Performance

| CONFIGURATION | LIGHT LOAD EXHAUST CFM / FT. | HEAVY LOAD EXHAUST CFM / FT. |
|-----------------------|---------------------------------|---------------------------------|
| Wall & 1-piece island | 100 | 150 |

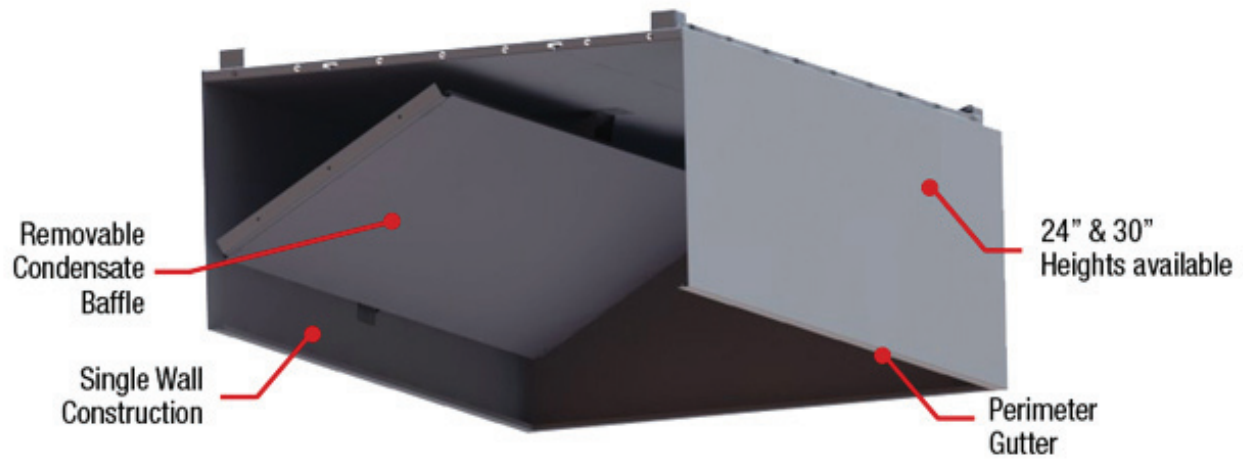
Recommended Duct Sizing: Exhaust - Based on 800 FPM

Features

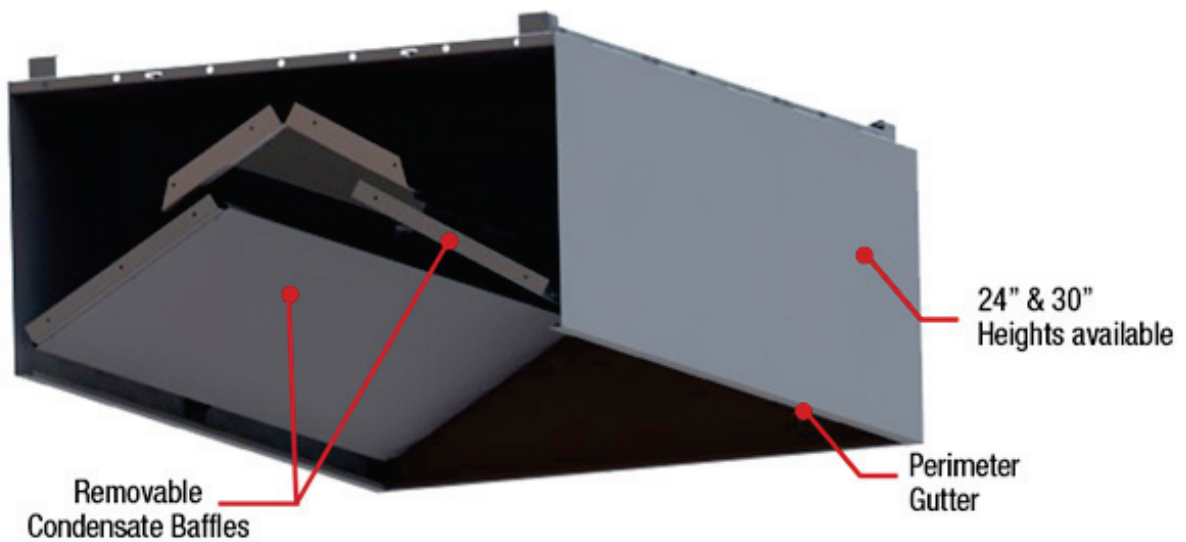
VHB Model



VHB Model with One REM Baffle



VHB Model with Two REM Baffles



Certifications

The VHB Model has been certified by ITS. This certification mark indicates that the product has been tested to and has met the minimum requirements of a widely recognized (consensus) U.S. and Canadian products safety standard, that the manufacturing site has been audited, and that the applicant has agreed to a program of periodic factory follow-up inspections to verify continued performance.

Models VHB are ETL Listed under file number 3186625SAT-001 and complies with UL710, ULC710 and ULC-S646 Standards.

